



VALMAR

CORFU

AT VALMAR  
IT'S ALWAYS RIVIERA SEASON

OPENING 2025

GREECE





# W

## WELCOME TO VALMAR

Inspired by the old-world charm, dapple and dazzle of the Italian Lido. Valmar is a hotel of distinct temperament and character.

Valmar is a 5\* hotel of distinct temperament and character. An extraordinary coastal hotel awaits you, with staggering views over the Ionian Sea, well-cosseted in a mythic, lush backdrop of pine-peaked hills and cypress trees.

Valuable, fresh and joyous, Valmar enmeshes Corfu's glorious, culturally rich and historical multiverse. Emblematic and lively, this elegant all-inclusive, family friendly hotel will seduce you with its finesse, joyful charisma and excellent service.

Part of the Elegant Collection by Louis Hotels, an extensive renovation, masterminded by AUDO, a dynamic team of father and son architects, breathes new life, into the domain.

To be completed in 2025, this inspired reiteration of an existing vintage hotel ushers in a new era, a new name, and a new story. A beginning entirely reset for modern life in tune with contemporary needs and a fresh page to be filled by our guests. Prepare to unwind and become a protagonist in the cinematographic Valmar.





Directly on beach

Above the coastal road, underground corridor to the beach

15km from the International airport of I. Kapodistrias

15km from Corfu town

17 km from Corfu port



## AT A GLANCE

A premium all-inclusive 5-star resort for all

I

201 fully reconstructed rooms & suites

II

4 new restaurants and 5 new bars

III

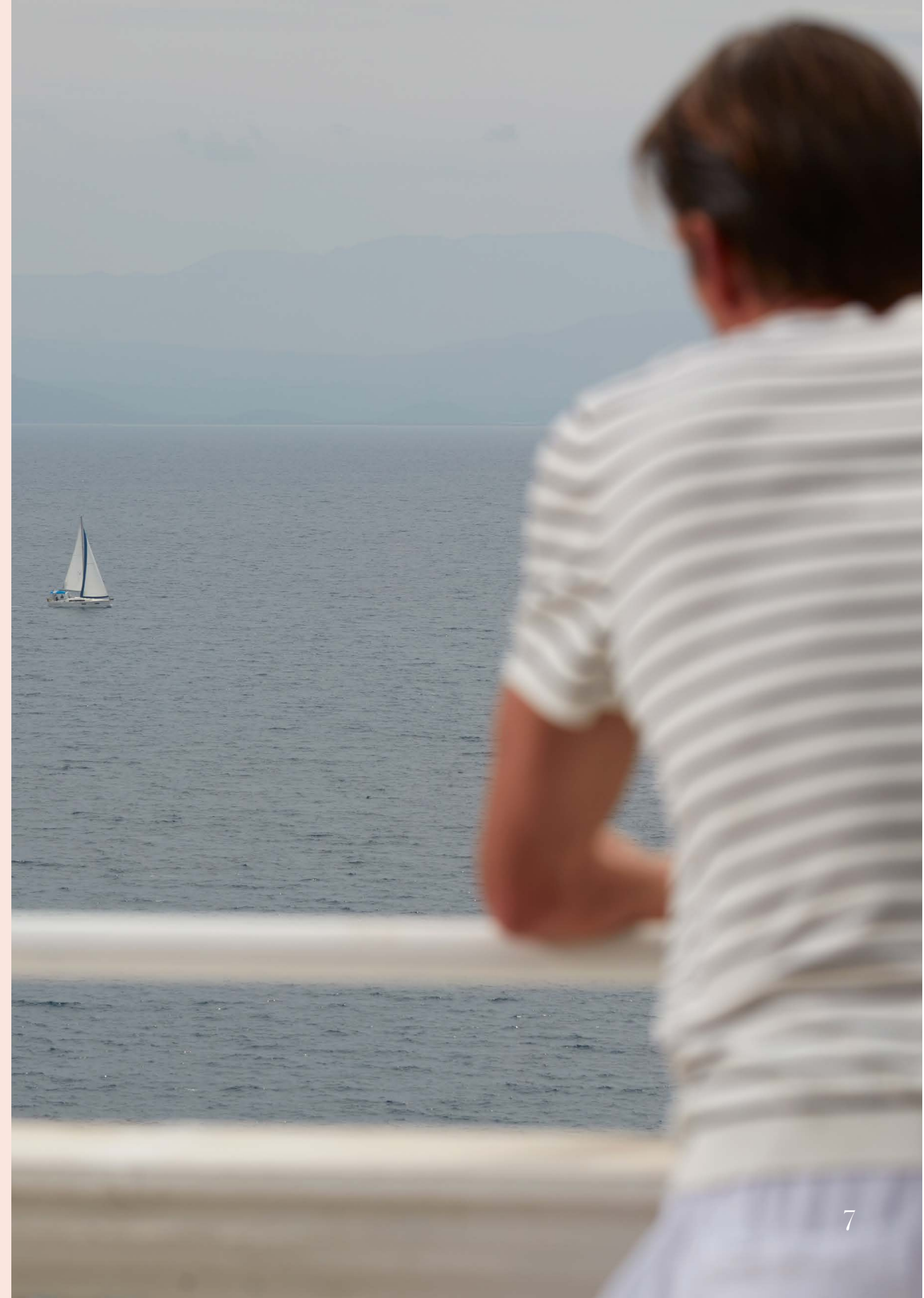
A brand new extensive spa

IIII

4 fully renovated pools including a large kids pool with water features

V

A newly constructed kids club and kids playground





DISTINCT TEMPERAMENT AND CHARACTER







## THE ROOMS

I

### 133 SUPERIOR ROOMS

97 with Sea Views | King Size Double Bed | 24-27m<sup>2</sup>

36 with Mountain Views | King Size Double Bed | 26m<sup>2</sup>

Note: 20% with twin beds

II

### 33 SUPERIOR TRIPLE ROOMS

21 with Sea Views | King Size Double Bed | 1 Sofa bed | 26.5m<sup>2</sup>

12 with Inland Views | King Size Double Bed | 1 Sofa bed | 26.5m<sup>2</sup>

III

### 24 FAMILY ROOMS

12 with Sea Views | King Size Double Bed | 2 Sofa beds | 26.5m<sup>2</sup>

12 with Inland Views | King Size Double Bed | 2 Sofa beds | 26.5m<sup>2</sup>

IIII

### 6 FAMILY GRAND SUITES

with Sea Views | 2 rooms | King Size Double Bed | 2 Sofa beds | 41-45m<sup>2</sup>

V

### 5 GRAND SUITES

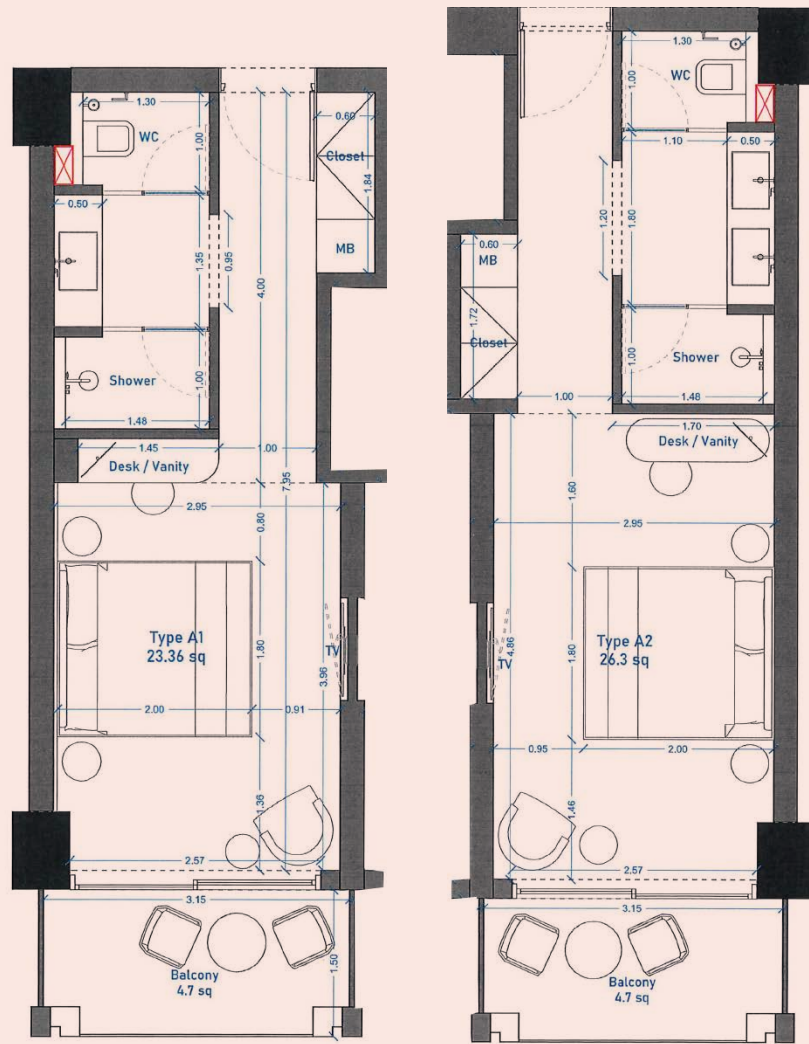
with Uninterrupted Sea Views | Large stand-alone jacuzzi bathtub

King Size Double Bed | 41-45m<sup>2</sup>



# SUPERIOR ROOM

front sea view



97 Rooms | 24-27m<sup>2</sup>

Front sea view

King Size Double Bed or Twin Beds

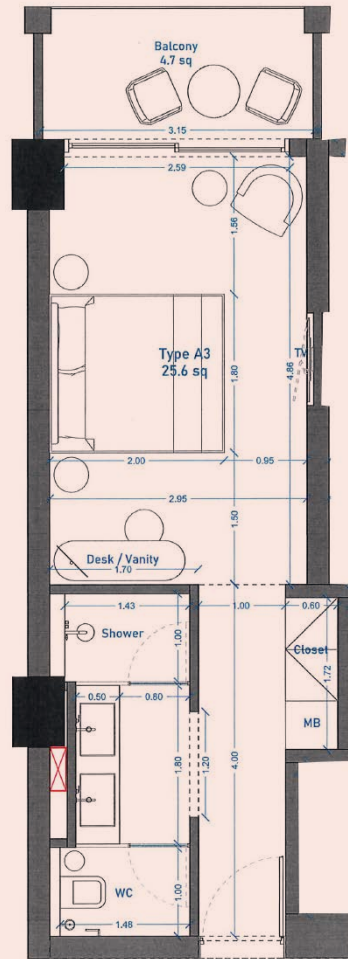
Separate wc and shower area, 24 with double sinks

Pax per room: 2



# SUPERIOR ROOM

mountain view



36 Rooms | 26m<sup>2</sup>

Mountain view

King Size Double Bed or Twin Beds

Separate wc and shower area, double sinks  
(except 6 for people with special needs)

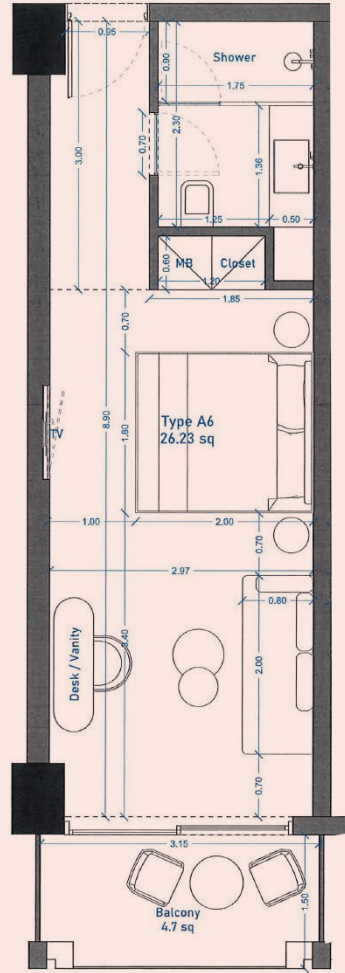
Pax per room: 2





# SUPERIOR TRIPLE ROOM

sea view



21 Rooms | 26.5m<sup>2</sup>

Sea view

King Size Double Bed

1 Sofa bed

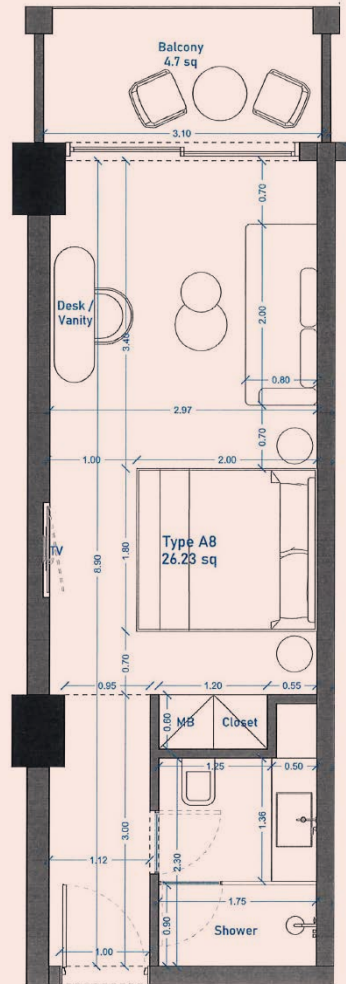
Pax per room: 3





# SUPERIOR TRIPLE ROOM

inland view



12 Rooms | 26.5m<sup>2</sup>

Inland view

King Size Double Bed

1 Sofa bed

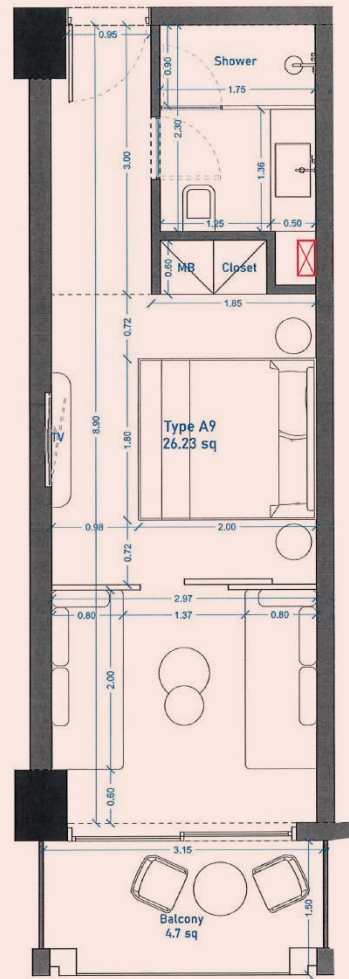
Pax per room: 3





# FAMILY ROOM

sea view



12 Rooms | 26.5m<sup>2</sup>

Sea view

King Size Double Bed  
2 Sofa beds

Pax per room: 4

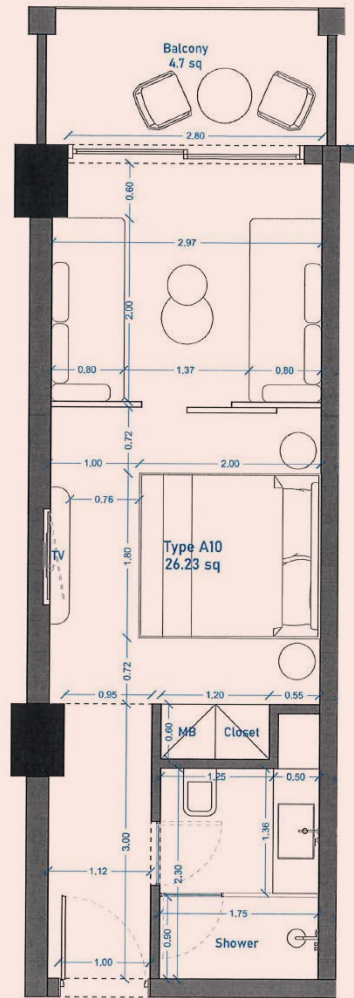
With sliding doors





# FAMILY ROOM

inland view



12 Rooms | 26.5m<sup>2</sup>

Inland view

King Size Double Bed  
2 Sofa beds

Pax per room: 4

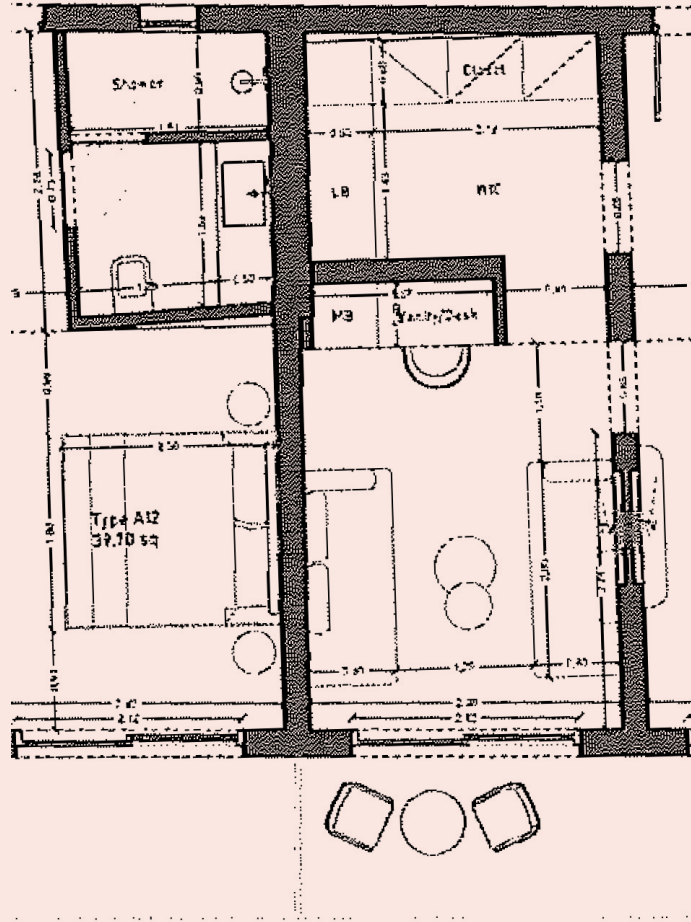
With sliding doors





# FAMILY GRAND SUITE

front sea view



6 Suites with 2 separate areas | 41-45m<sup>2</sup>

Uninterrupted sea views

King Size Double Bed  
2 Sofa beds

1 bath shower, wc area

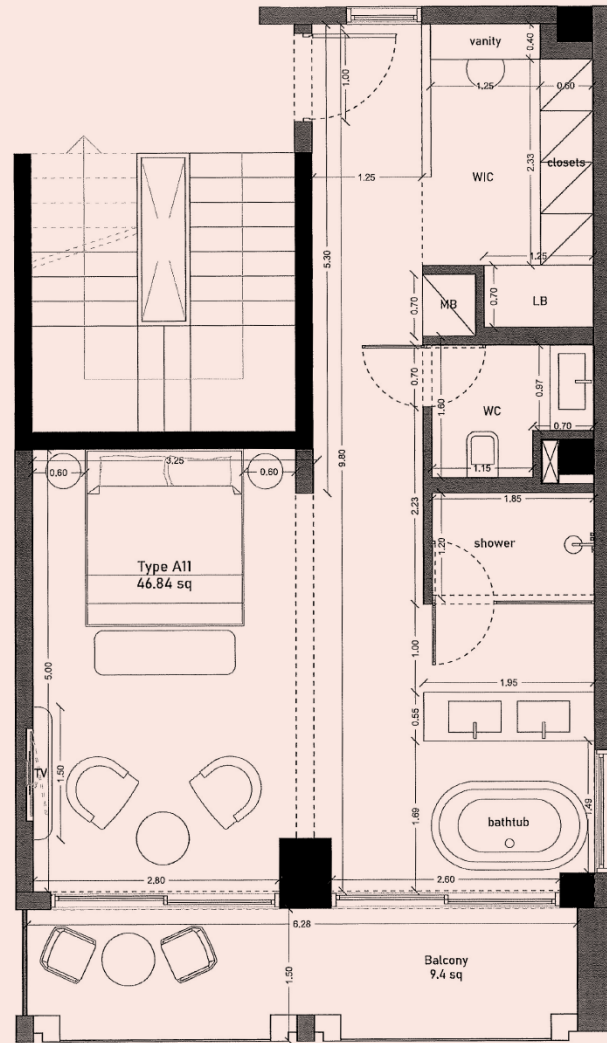
Pax per room: 4





# GRAND SUITE

front sea view



5 Suites with walk-in dressing rooms, extended wet areas with double showers | 41-45m<sup>2</sup>

Large, stand-alone jacuzzi bathtub

Lounge area

Uninterrupted sea views

King Size Double Bed

Pax per room: 2







## ROOM FACILITIES

- Walk In Shower
- Luxurious Beauty Products Hairdryer
- Bathrobes & Slippers
- Balcony Or Terrace
- 100% Egyptian Cotton Luxurious Bedding
- Wireless Bluetooth Speaker available In Each Room
- Smart Tv Set
- Direct Dial Telephone
- Satellite TV
- Air Condition
- Safe Deposit Box With Keypad Lock
- Coffee & Tea Making Facilities
- Nespresso Machine
- Complimentary Mini Bar With Branded Spirits upon Check In
- Water Replenishment Every Day
- Free Ultrahigh-Speed Wi-Fi Connection
- Welcome Treat Upon Arrival
- Room Service (At A Charge)
- 7 Days a Week Cleaning Service



# MAIN RESTAURANT



## THE RESTAURANTS

I

### MAIN RESTAURANT

Lavish buffets, live show cooking stations and signature concepts like Greek breakfast, healthy salad bar and exclusive themed dinners

II

### SEA FRONT

Mediterranean restaurant à la carte

III

### VIRU ROOFTOP RESTAURANT

Peruvian Fusion cuisine  
\*prior reservation required

III

### PARK POOL SNACK BAR

---

Extensive vegan and gluten-free menus  
in all food and beverage outlets

Lobby Patisserie and Coffee Bar





ROOFTOP RESTAURANT



# MAIN BAR LOBBY LEVEL



## THE BARS

International Branded Spirits, Beers, Soft Drinks, Juices, Tea/Coffee  
Varieties And Cocktails Prepared By our Mixologists

International and Local Wine Labels

MAIN BAR AT LOBBY LEVEL

BEACH BAR

2 POOL BARS  
with sunbed beverage service

ROOFTOP BAR







## THE POOLS

with breath-taking views

MAIN POOL  
for adults and children

RELAXING POOL  
for adults with-water jets

2 KIDS POOLS  
one extensive with water features and play area





## THE SPA

Our premium spa will include

SAUNA

HAMMAM

TREATMENT ROOMS

RELAXATION AREA

\*\* Award-winning spa treatments available at a charge





OPENING 2025

Valmar Corfu  
Agios Ioannis Meliticon, 490 84, Corfu, Greece

[valmarcorfu.com](http://valmarcorfu.com)